



COMMONWEALTH OF KENTUCKY
TRANSPORTATION CABINET
www.transportation.ky.gov/

Andy Beshear
GOVERNOR

Jim Gray
SECRETARY

May 24, 2022

CALL NO. 103
CONTRACT ID NO. 221025
ADDENDUM # 4

Subject: Hancock County, STP 0602(017)
Letting May 26, 2022

- (1) Revised - Proposal Bid Items - Pages 728-732 of 732
- (2) Revised - Plan Sheets - R2E, R50, R51

Proposal revisions are available at <http://transportation.ky.gov/Construction-Procurement/>.

If you have any questions, please contact us at 502-564-3500.

Sincerely,

Rachel Mills,

A handwritten signature in black ink that reads "Rachel Mills".

Rachel Mills, P.E.
Director
Division of Construction Procurement

RM:mr
Enclosures

PROPOSAL BID ITEMS

221025

Page 1 of 5

Report Date 5/24/22

Section: 0001 - PAVING

LINE	BID CODE	ALT	DESCRIPTION	QUANTITY	UNIT	UNIT PRIC	FP	AMOUNT
0010	00003		CRUSHED STONE BASE (REVISED 5-24-22)	28,007.00	TON		\$	
0020	00190		LEVELING & WEDGING PG64-22	820.00	TON		\$	
0030	00214		CL3 ASPH BASE 1.00D PG64-22 (REVISED 5-24-22)	24,231.00	TON		\$	
0040	00324		CL3 ASPH SURF 0.50B PG64-22 (REVISED 5-24-22)	5,614.00	TON		\$	
0050	24970EC		ASPHALT MATERIAL FOR TACK NON- TRACKING	63.00	TON		\$	

Section: 0002 - ROADWAY

LINE	BID CODE	ALT	DESCRIPTION	QUANTITY	UNIT	UNIT PRIC	FP	AMOUNT
0060	00078		CRUSHED AGGREGATE SIZE NO 2	2,675.00	TON		\$	
0070	01000		PERFORATED PIPE-4 IN	30,169.00	LF		\$	
0080	01010		NON-PERFORATED PIPE-4 IN	520.00	LF		\$	
0090	01015		INSPECT & CERTIFY EDGE DRAIN SYSTEM	1.00	LS		\$	
0100	01020		PERF PIPE HEADWALL TY 1-4 IN	3.00	EACH		\$	
0110	01024		PERF PIPE HEADWALL TY 2-4 IN	3.00	EACH		\$	
0120	01028		PERF PIPE HEADWALL TY 3-4 IN	21.00	EACH		\$	
0130	01032		PERF PIPE HEADWALL TY 4-4 IN	24.00	EACH		\$	
0140	01740		CORED HOLE DRAINAGE BOX CON-4 IN	1.00	EACH		\$	
0150	01982		DELINEATOR FOR GUARDRAIL MONO DIRECTIONAL WHITE	11.00	EACH		\$	
0160	02058		REMOVE PCC PAVEMENT	6,582.00	SQYD		\$	
0170	02091		REMOVE PAVEMENT	112.00	SQYD		\$	
0180	02159		TEMP DITCH	7,814.00	LF		\$	
0190	02160		CLEAN TEMP DITCH	3,907.00	LF		\$	
0200	02200		ROADWAY EXCAVATION	68,587.00	CUYD		\$	
0210	02242		WATER	2,960.00	MGAL		\$	
0220	02351		GUARDRAIL-STEEL W BEAM-S FACE	637.50	LF		\$	
0230	02369		GUARDRAIL END TREATMENT TYPE 2A	3.00	EACH		\$	
0240	02381		REMOVE GUARDRAIL	1,172.00	LF		\$	
0250	02391		GUARDRAIL END TREATMENT TYPE 4A	3.00	EACH		\$	
0260	02429		RIGHT-OF-WAY MONUMENT TYPE 1	9.00	EACH		\$	
0270	02432		WITNESS POST	9.00	EACH		\$	
0280	02483		CHANNEL LINING CLASS II	1,524.00	TON		\$	
0290	02484		CHANNEL LINING CLASS III	47.00	TON		\$	
0300	02545		CLEARING AND GRUBBING 61.96 ACRES	1.00	LS		\$	
0310	02562		TEMPORARY SIGNS	303.00	SQFT		\$	
0320	02585		EDGE KEY	577.00	LF		\$	
0330	02602		FABRIC-GEOTEXTILE CLASS 1	2,476.00	SQYD		\$	
0340	02603		FABRIC-GEOTEXTILE CLASS 2	7,888.00	SQYD		\$	
0350	02607		FABRIC-GEOTEXTILE CLASS 2 FOR PIPE	4,009.00	SQYD	\$2.00	\$	\$8,018.00
0360	02650		MAINTAIN & CONTROL TRAFFIC	1.00	LS		\$	
0370	02671		PORTABLE CHANGEABLE MESSAGE SIGN	2.00	EACH		\$	

PROPOSAL BID ITEMS

221025

Page 2 of 5

Report Date 5/24/22

LINE	BID CODE	ALT	DESCRIPTION	QUANTITY	UNIT	UNIT PRIC	FP	AMOUNT
0380	02696		SHOULDER RUMBLE STRIPS	29,292.00	LF		\$	
0390	02701		TEMP SILT FENCE	7,814.00	LF		\$	
0400	02703		SILT TRAP TYPE A	62.00	EACH		\$	
0410	02704		SILT TRAP TYPE B	62.00	EACH		\$	
0420	02705		SILT TRAP TYPE C	62.00	EACH		\$	
0430	02706		CLEAN SILT TRAP TYPE A	62.00	EACH		\$	
0440	02707		CLEAN SILT TRAP TYPE B	62.00	EACH		\$	
0450	02708		CLEAN SILT TRAP TYPE C	62.00	EACH		\$	
0460	02709		CLEAN TEMP SILT FENCE	7,814.00	LF		\$	
0470	02726		STAKING	1.00	LS		\$	
0480	02775		ARROW PANEL	2.00	EACH		\$	
0490	05950		EROSION CONTROL BLANKET	14,459.00	SQYD		\$	
0500	05952		TEMP MULCH	200,924.00	SQYD		\$	
0510	05953		TEMP SEEDING AND PROTECTION	149,943.00	SQYD		\$	
0520	05963		INITIAL FERTILIZER	9.30	TON		\$	
0530	05964		MAINTENANCE FERTILIZER	15.50	TON		\$	
0540	05985		SEEDING AND PROTECTION	299,886.00	SQYD		\$	
0550	05992		AGRICULTURAL LIMESTONE	185.90	TON		\$	
0560	06406		SBM ALUM SHEET SIGNS .080 IN	636.20	SQFT		\$	
0570	06407		SBM ALUM SHEET SIGNS .125 IN	277.50	SQFT		\$	
0580	06410		STEEL POST TYPE 1	1,250.00	LF		\$	
0590	06510		PAVE STRIPING-TEMP PAINT-4 IN	104,560.00	LF		\$	
0600	06568		PAVE MARKING-THERMO STOP BAR-24IN	237.00	LF		\$	
0610	06574		PAVE MARKING-THERMO CURV ARROW	14.00	EACH		\$	
0620	06592		PAVEMENT MARKER TYPE V-B W/R	117.00	EACH		\$	
0630	10020NS		FUEL ADJUSTMENT	69,721.00	DOLL	\$1.00	\$	\$69,721.00
0640	10030NS		ASPHALT ADJUSTMENT	120,185.00	DOLL	\$1.00	\$	\$120,185.00
0650	21289ED		LONGITUDINAL EDGE KEY	3,779.00	LF		\$	
0660	24631EC		BARCODE SIGN INVENTORY	131.00	EACH		\$	
0670	24814EC		PIPELINE INSPECTION	1,152.00	LF		\$	
0680	24995EC		PAVE STRIPING-SPRAY THERMO-6 IN W	53,182.00	LF		\$	
0690	24996EC		PAVE STRIPING-SPRAY THERMO-6 IN Y	38,923.00	LF		\$	

Section: 0003 - DRAINAGE

LINE	BID CODE	ALT	DESCRIPTION	QUANTITY	UNIT	UNIT PRIC	FP	AMOUNT
0700	00440		ENTRANCE PIPE-15 IN	33.00	LF		\$	
0710	00462		CULVERT PIPE-18 IN	430.00	LF		\$	
0720	00464		CULVERT PIPE-24 IN	368.00	LF		\$	
0730	00466		CULVERT PIPE-30 IN	138.00	LF		\$	
0740	00522		STORM SEWER PIPE-18 IN	21.00	LF		\$	
0750	00524		STORM SEWER PIPE-24 IN	187.00	LF		\$	
0760	00526		STORM SEWER PIPE-30 IN	8.00	LF		\$	
0770	01310		REMOVE PIPE	496.00	LF		\$	
0780	01490		DROP BOX INLET TYPE 1	8.00	EACH		\$	
0790	01493		DROP BOX INLET TYPE 2	2.00	EACH		\$	
0800	01650		JUNCTION BOX	7.00	EACH		\$	
0810	02625		REMOVE HEADWALL	37.00	EACH		\$	

PROPOSAL BID ITEMS

221025

Page 3 of 5

Report Date 5/24/22

LINE	BID CODE	ALT	DESCRIPTION	QUANTITY	UNIT	UNIT PRIC	FP	AMOUNT
0820	26131ED		SLOPED AND MITERED HEADWALL-18 IN	11.00	EACH		\$	
0830	26132ED		SLOPED AND MITERED HEADWALL-24 IN	9.00	EACH		\$	
0840	26133ED		SLOPED AND MITERED HEADWALL-30 IN	4.00	EACH		\$	

Section: 0004 - BRIDGE-CULVERT-28432

LINE	BID CODE	ALT	DESCRIPTION	QUANTITY	UNIT	UNIT PRIC	FP	AMOUNT
0850	02625		REMOVE HEADWALL	2.00	EACH		\$	
0860	08003		FOUNDATION PREPARATION	1.00	LS		\$	
0870	08100		CONCRETE-CLASS A	153.10	CUYD		\$	
0880	08150		STEEL REINFORCEMENT	23,744.00	LB		\$	

Section: 0005 - BRIDGE-CULVERT-28433

LINE	BID CODE	ALT	DESCRIPTION	QUANTITY	UNIT	UNIT PRIC	FP	AMOUNT
0890	02403		REMOVE CONCRETE MASONRY	6.00	CUYD		\$	
0900	08003		FOUNDATION PREPARATION	1.00	LS		\$	
0910	08100		CONCRETE-CLASS A	16.80	CUYD		\$	
0920	08150		STEEL REINFORCEMENT	1,910.00	LB		\$	

Section: 0006 - BRIDGE-CULVERT-28434

LINE	BID CODE	ALT	DESCRIPTION	QUANTITY	UNIT	UNIT PRIC	FP	AMOUNT
0930	02403		REMOVE CONCRETE MASONRY	11.80	CUYD		\$	
0940	08003		FOUNDATION PREPARATION	1.00	LS		\$	
0950	08100		CONCRETE-CLASS A	41.70	CUYD		\$	
0960	08150		STEEL REINFORCEMENT	4,477.00	LB		\$	

Section: 0007 - BRIDGE-CULVERT-28435

LINE	BID CODE	ALT	DESCRIPTION	QUANTITY	UNIT	UNIT PRIC	FP	AMOUNT
0970	02403		REMOVE CONCRETE MASONRY	11.60	CUYD		\$	
0980	08003		FOUNDATION PREPARATION	1.00	LS		\$	
0990	08100		CONCRETE-CLASS A	47.60	CUYD		\$	
1000	08150		STEEL REINFORCEMENT	6,206.00	LB		\$	

Section: 0008 - UTILITY-GAS

LINE	BID CODE	ALT	DESCRIPTION	QUANTITY	UNIT	UNIT PRIC	FP	AMOUNT
1010	02259		FENCE-TEMP	3,000.00	LF		\$	
1020	14074		W PLUG EXISTING MAIN 3 WAY TEE FITTING	8.00	EACH		\$	
1030	14074		W PLUG EXISTING MAIN FACTOR 0.32	80.00	EACH		\$	

PROPOSAL BID ITEMS

221025

Page 4 of 5

Report Date 5/24/22

LINE	BID CODE	ALT	DESCRIPTION	QUANTITY	UNIT	UNIT PRIC	FP	AMOUNT
1040	16022		G PIPE SPECIAL (04 INCH 4.5"OD X0.188W.T.,API-5L GR.Z-42,12-14 MILS FBE,30MILS ARO)	199.00	LF		\$	
1050	16022		G PIPE SPECIAL (3/4 IN 1.05"OD X 0.154W.T.,API-5L,SCH80,12-14 MILS FBE,20 MILS ARO)	74.00	LF		\$	
1060	16022		G PIPE SPECIAL 1 IN	80.00	LF		\$	
1070	16022		G PIPE SPECIAL 3/4 IN (1.05"OD X 0.154 W.T., API-5L, SCH 80, 12-14 MILS FBE)	226.00	LF		\$	
1080	16023		G PIPE STEEL 02 INCH	40.00	LF		\$	
1090	16025		G PIPE STEEL 04 INCH (4.5" OD X 0.188 W.T., API-5L, GR. X-42, 12-14 MILS FBE, 30 MILS)	11,930.00	LF		\$	
1100	16030		G REGULATOR STATION	1.00	EACH		\$	
1110	16030		G REGULATOR STATION PLATE ASSEMBLY	8.00	EACH		\$	
1120	16040		G SERVICE SPECIAL 3/4 IN	7.00	EACH		\$	
1130	16040		G SERVICE SPECIAL REDUCER 2 X 1	3.00	EACH		\$	
1140	16040		G SERVICE SPECIAL REDUCER 2 X 3/4	7.00	EACH		\$	
1150	16040		G SERVICE SPECIAL TEE 4 X 2	10.00	EACH		\$	
1160	16057		G VALVE STEEL 02 INCH	1.00	EACH		\$	
1170	16059		G VALVE STEEL 04 INCH	1.00	EACH		\$	
1180	16076		G SPECIAL ITEM 45 DEG	24.00	EACH		\$	
1190	16076		G SPECIAL ITEM 90 DEG	2.00	EACH		\$	
1200	16111		G VALVE STEEL 01 INCH	3.00	EACH		\$	
1210	23020EN		TRIM AND REMOVE TREES AND BRUSH	.75	ACRE		\$	

Section: 0009 - WATERLINE

LINE	BID CODE	ALT	DESCRIPTION	QUANTITY	UNIT	UNIT PRIC	FP	AMOUNT
1220	14003		W CAP EXISTING MAIN	8.00	EACH		\$	
1230	14006		W ENCASMENT STEEL BORED RANGE 1	145.00	LF		\$	
1240	14007		W ENCASMENT STEEL BORED RANGE 2	240.00	LF		\$	
1250	14010		W ENCASMENT STEEL BORED RANGE 5	120.00	LF		\$	
1260	14012		W ENCASMENT STEEL OPEN CUT RANGE 1	20.00	LF		\$	
1270	14019		W FIRE HYDRANT ASSEMBLY	2.00	EACH		\$	
1280	14023		W FLUSHING ASSEMBLY	2.00	EACH		\$	
1290	14058		W PIPE PVC 04 INCH	1,200.00	LF		\$	
1300	14061		W PIPE PVC 10 INCH	614.00	LF		\$	
1310	14077		W SERV PE/PLST LONG SIDE 1 IN	1.00	EACH		\$	
1320	14079		W SERV PE/PLST LONG SIDE 2 IN	1.00	EACH		\$	
1330	14089		W TAPPING SLEEVE AND VALVE SIZE 1	4.00	EACH		\$	
1340	14090		W TAPPING SLEEVE AND VALVE SIZE 2	3.00	EACH		\$	
1350	14096		W TIE-IN 10 INCH	1.00	EACH		\$	

PROPOSAL BID ITEMS

221025

Page 5 of 5

Report Date 5/24/22

LINE	BID CODE	ALT	DESCRIPTION	QUANTITY	UNIT	UNIT PRIC	FP	AMOUNT
1360	14107		W VALVE 10 INCH	2.00	EACH		\$	
1370	14131		W METER SPECIAL	2.00	EACH		\$	

Section: 0010 - DEMOBILIZATION &/OR MOBILIZATION

LINE	BID CODE	ALT	DESCRIPTION	QUANTITY	UNIT	UNIT PRIC	FP	AMOUNT
1380	02568		MOBILIZATION	1.00	LS		\$	
1390	02569		DEMOBILIZATION	1.00	LS		\$	

PAVING AREAS

ITEM	S O U C U A R E F E Y A R D S										
	U.S. 60 DRIVING LANES	U.S. 60 SHOULDERS	APPROACHES	MEDIAN CROSSOVER	ENTRANCES	MOT					TOTAL PROJECT
1/2" CL3 ASPH. SURF. 0.50B PG64-22	42,877	17,365	1,585	4,481	449	1,282					68,039
41/4" CL3 ASPH. BASE 1,00D PG64-22	38,036	17,365		1,556							56,957
41/2" CL3 ASPH. BASE 1,00D PG64-22	39,265			1,556							40,821
3" CL3 ASPH. BASE 1,00D PG64-22			3,194		453	1,282					4,929
4" CRUSHED STONE BASE				461							461
6" CRUSHED STONE BASE	40,567		1,615	1,556							43,738
8" CRUSHED STONE BASE						1,282					1,282
LEVELING AND WEDGING PG64-22	414										414
2											
2											
FULL DEPTH CRUSHED STONE BASE		5,904									5,904
ASPHALT MATERIAL FOR TACK NON-TRACKING	117,868	17,365	4,809	9,149	914						150,015

PAVING SUMMARY

ITEM CODE	ITEM	UNIT	U.S. 60 SHOULDERS	U.S. 60 DRIVING LANES	ENTRANCES	MEDIAN CROSSOVER	APPROACHES	MOT	TOTAL PROJECT
3	CRUSHED STONE BASE	TON	13,996	12,221	557	537	106	590	28,007
190	LEVELING AND WEDGING PG64-22	TON	820	820					820
214	CL3 ASPH. BASE 1,00D PG64-22	TON	18,609	4,059	527	749	75	212	24,231
324	CL3 ASPH. SURF. 0.50B PG64-22	TON	3,537	1,433	131	370	37	106	5,614
24970EC	ASPHALT MATERIAL FOR TACK NON-TRACKING	TON	49.5	7.3	2.0	3.8	0.4		63

NOTES

- ALL ASPHALT MIXTURES SHALL BE ESTIMATED AT 110 LBS. PER SQ. YD. PER INCH OF DEPTH, UNLESS NOTED OTHERWISE.
- ① ESTIMATED AT 1.15 LBS. PER SQ. YD. PER INCH OF DEPTH.
 - ② QUANTITY IN CUBIC YARDS.
 - ③ ESTIMATE AT 0.84 LBS. PER SQ. YD.

REVISED : MAY 24, 2022

COUNTY OF HANCOCK
ITEM NO. 2-226
SHEET NO. R2E

ITEM CODE	ITEM	UNIT	U.S. 60 SHOULDERS	APPROACHES	MEDIAN CROSSOVER	ENTRANCES	MOT	TOTAL PROJECT
3	CRUSHED STONE BASE	TON	13,996	557	537	106	590	28,007
190	LEVELING AND WEDGING PG64-22	TON	820					820
214	CL3 ASPH. BASE 1.00D PG64-22	TON	18,609	527	749	75	212	24,231
324	CL3 ASPH. SURF. 0.50B PG64-22	TON	3,537	131	370	37	106	5,614
24970EC	ASPHALT MATERIAL FOR TACK NON-TRACKING	TON	49.5	7.3	3.8	0.4		63

NOTES

- ALL ASPHALT MIXTURES SHALL BE ESTIMATED AT 110 LBS. PER SQ. YD. PER INCH OF DEPTH, UNLESS NOTED OTHERWISE.
- ① ESTIMATED AT 1.15 LBS. PER SQ. YD. PER INCH OF DEPTH.
 - ② QUANTITY IN CUBIC YARDS.
 - ③ ESTIMATE AT 0.84 LBS. PER SQ. YD.

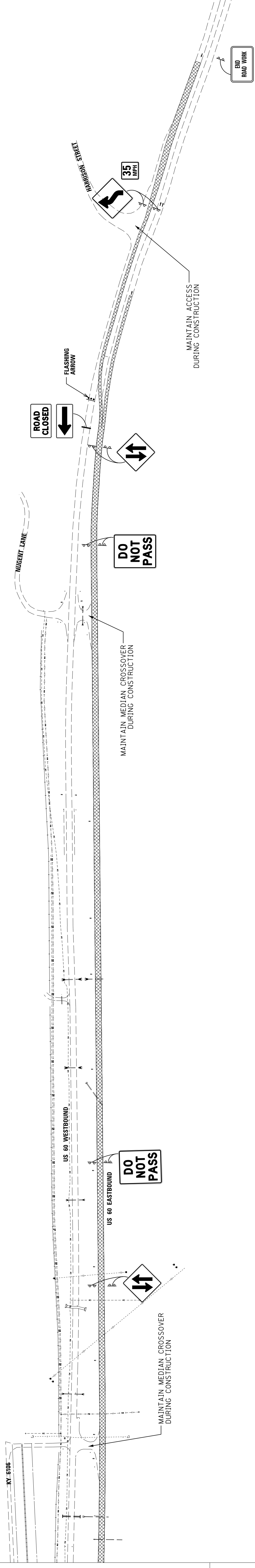
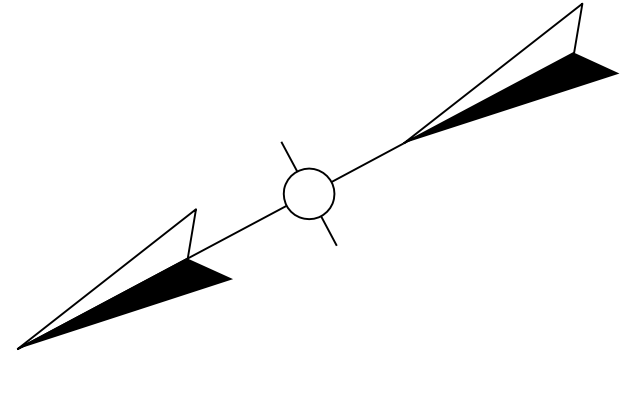
PAVING SUMMARY

ITEM	U.S. 60 SHOULDERS	APPROACHES	MEDIAN CROSSOVER	ENTRANCES	MOT	TOTAL PROJECT
1/2" CL3 ASPH. SURF. 0.50B PG64-22	42,877	17,365	1,585	4,481	449	68,039
41/4" CL3 ASPH. BASE 1.00D PG64-22	38,036	17,365	1,556			56,957
41/2" CL3 ASPH. BASE 1.00D PG64-22	39,265		1,556			40,821
3" CL3 ASPH. BASE 1.00D PG64-22	40,567		453	461		41,481
6" CRUSHED STONE BASE		1,615	1,556			3,171
8" CRUSHED STONE BASE	414					414
LEVELING AND WEDGING PG64-22					1,282	1,282
FULL DEPTH CRUSHED STONE BASE		5,904		914		6,818
ASPHALT MATERIAL FOR TACK NON-TRACKING	117,868	17,365	4,809	9,149	914	150,015

PAVING AREAS

PAVING SUMMARY

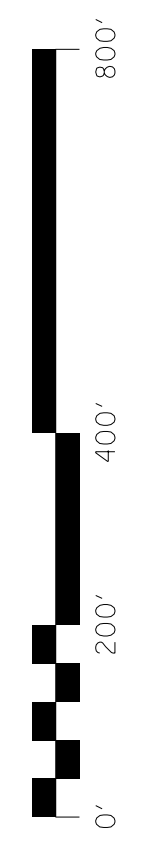
COUNTY OF	ITEM NO.	SHEET NO.
HANCOCK	2-226	R50



LEGEND

	MAINTAIN TRAFFIC THIS PHASE
	CONSTRUCT THIS PHASE

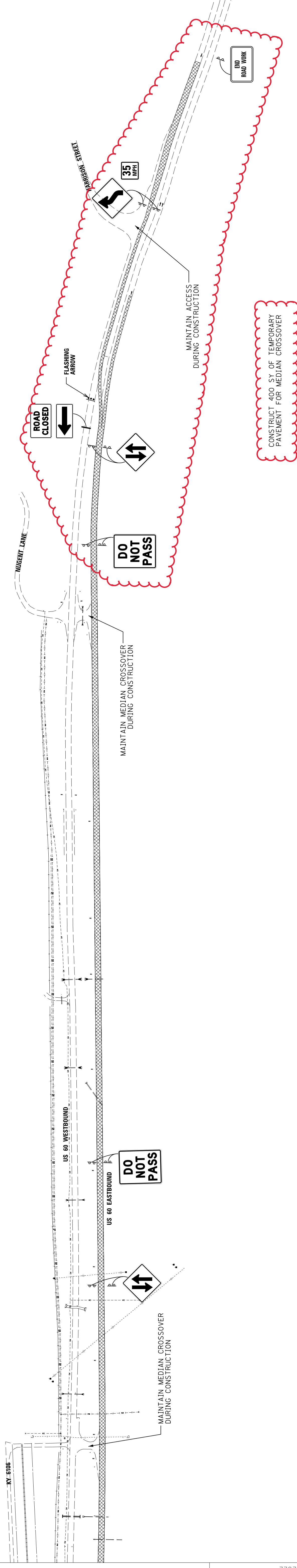
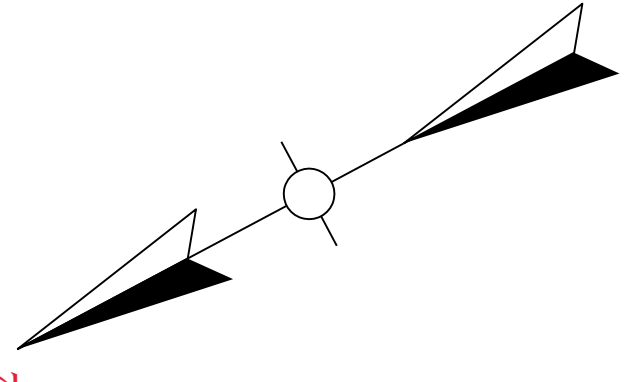
MAINTENANCE OF TRAFFIC
PHASE 1
SHEET 5 OF 6



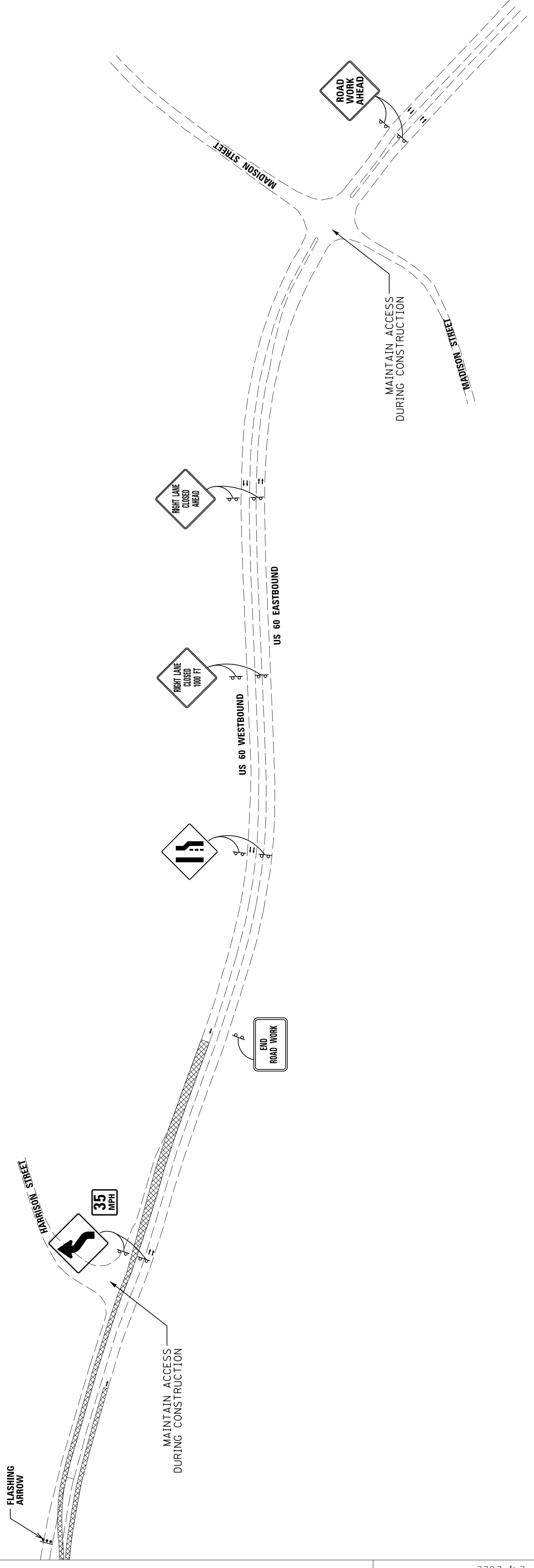
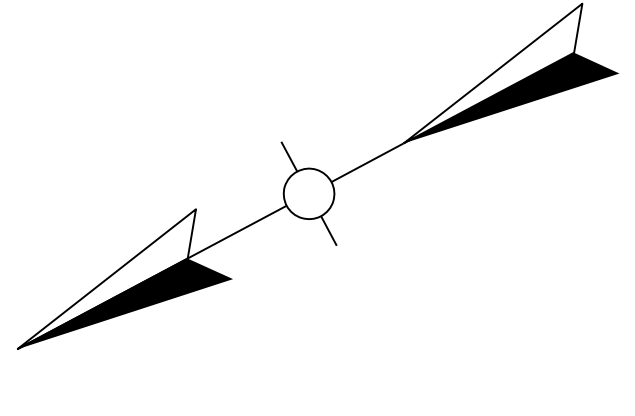
SCALE: 1"=200'

COUNTY OF	ITEM NO.	SHEET NO.
HANCOCK	2-226	R50

REVISED: MAY 24, 2022



COUNTY OF	ITEM NO.	SHEET NO.
HANCOCK	2-226	R51

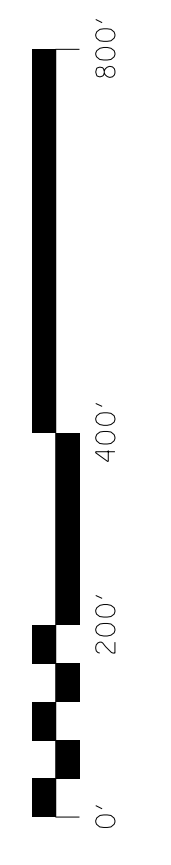


LEGEND

	MAINTAIN TRAFFIC THIS PHASE
	CONSTRUCT THIS PHASE

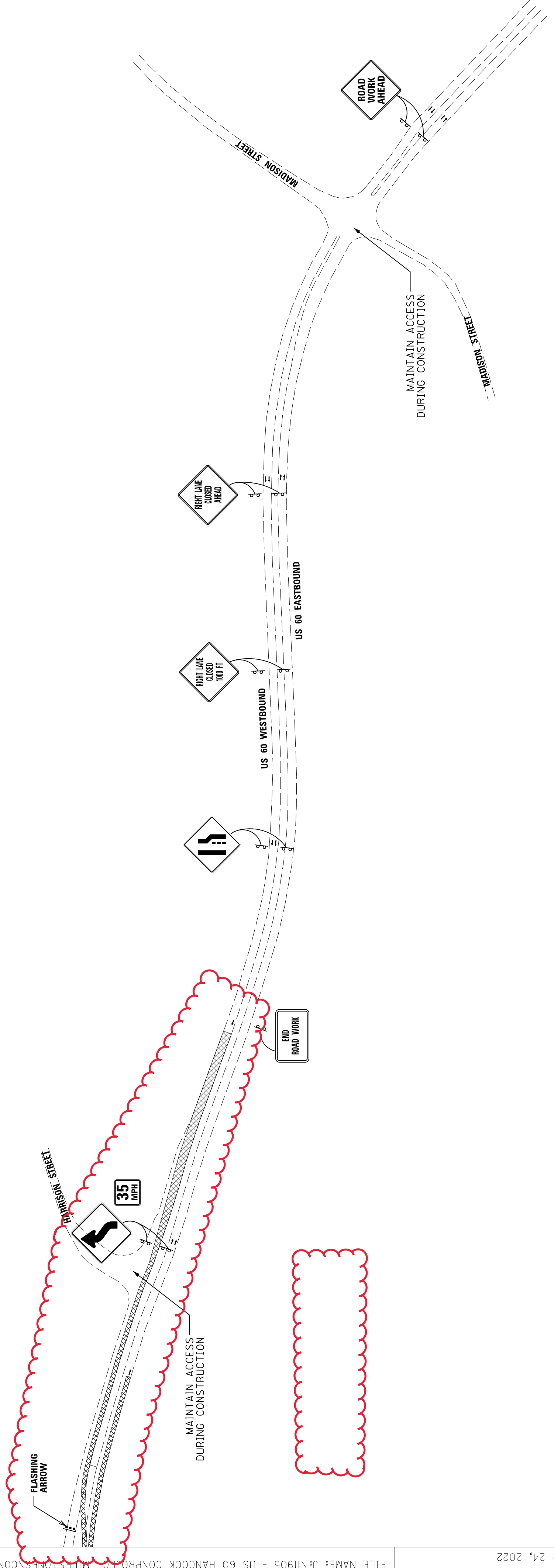
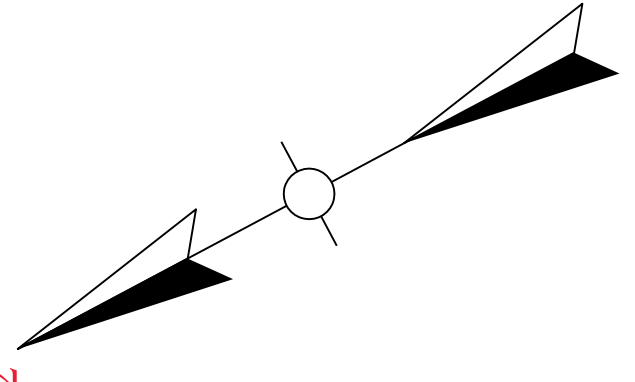
MAINTENANCE OF TRAFFIC
PHASE 1
SHEET 6 OF 6

SCALE: 1"=200'



COUNTY OF	ITEM NO.	SHEET NO.
HANCOCK	2-226	R51

REVISED: MAY 24, 2022



LEGEND

	MAINTAIN TRAFFIC THIS PHASE
	CONSTRUCT THIS PHASE

MAINTENANCE OF TRAFFIC
PHASE 1
SHEET 6 OF 6

SCALE: 1"=200'

